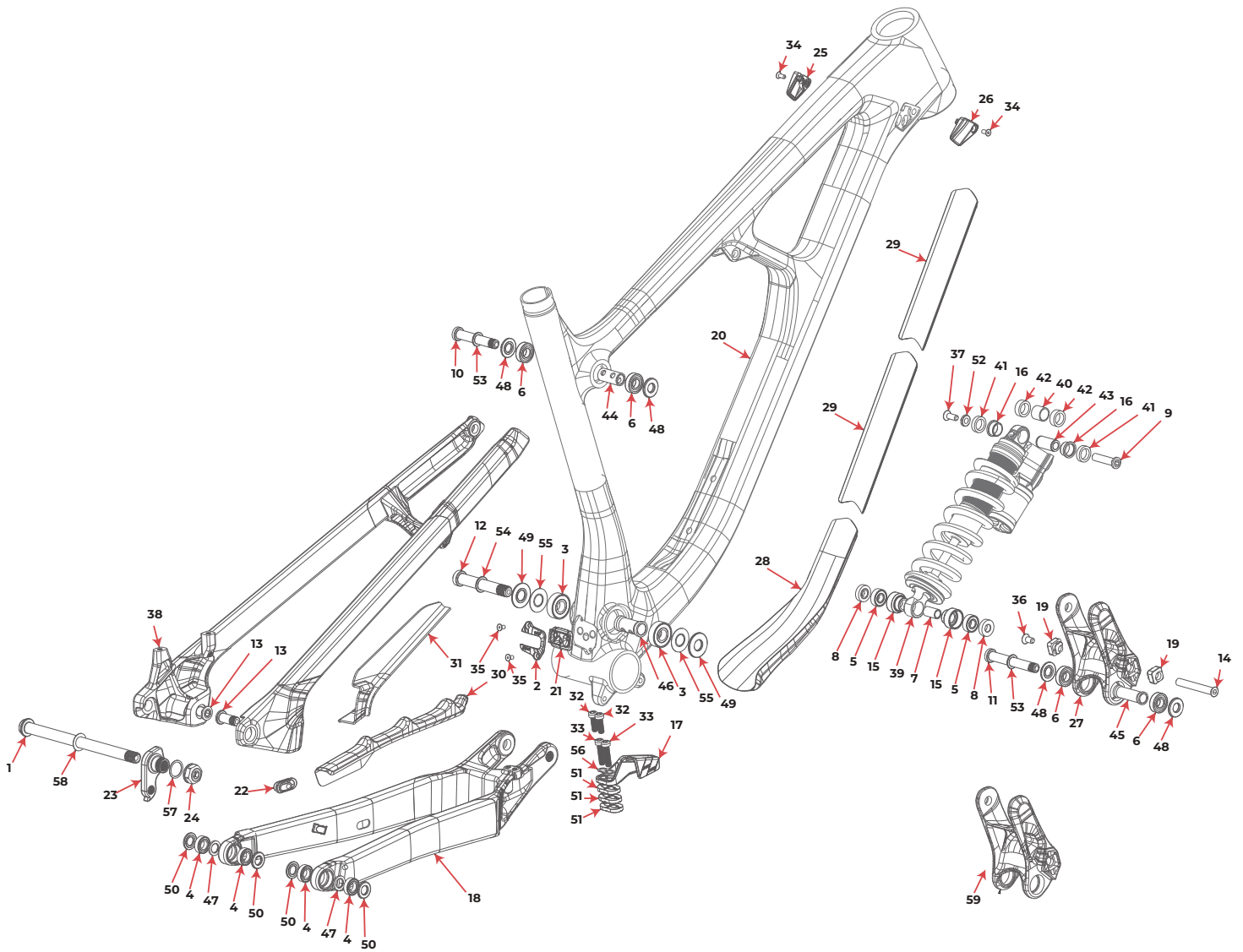


MY22 MY21 MY20

Slayer Carbon



2020 SLAYER 27_29 ALLOY

EVP/PV

| # | QTY | ITEM | PART NO. | REVISION | DESCRIPTION |
|---|-----|----------------------|--------------|----------|--|
| 1810015 LINK WITH BEARING KIT SLAYER 27 2020 | | | | | |
| 27 | 1 | LINK | 1090020 | C | 2020 SLAYER 27 LINK |
| 6 | 2 | BEARING | 1807042 | NIL | ENDURO 6900 2RS MAX, 22X10X6 |
| 1810016 LINK WITH BEARING KIT SLAYER 29 2020 | | | | | |
| 59 | 1 | LINK | 1090021 | | 2020 SLAYER 29 LINK |
| 6 | 2 | BEARING | 1807042 | NIL | ENDURO 6900 2RS MAX, 22X10X6 |
| 1818013 KIT STANDARD HANGER | | | | | |
| 23 | 1 | HANGER | 1099031 | A | REAR DER. HANGER, EXT THREAD, STD MOUNT |
| 24 | 1 | HANGER NUT | 1099033 | NIL | HANGER NUT, M16X1, 8MM HEX |
| 57 | 1 | WASHER | 1808029 | NIL | WASHER, 16x20x0.5MM, 304 SS |
| 1810017 PIVOT BOLT KIT SLAYER 2020 | | | | | |
| 9 | 1 | BOLT | 1800006 | NIL | SLAYER SHOCK BOLT, FORWARD, OD:8, L:33, 5MM HEX |
| 52 | 1 | WASHER | 1800007 | NIL | SLAYER SHOCK SCREW WASHER, M6 C'SINK |
| 37 | 1 | SCREW, M6X16 | 1807120-BK | NIL | FLAT HEAD C'SUNK SOCKET SCREW, M6-1.0 X 16mm, Stainless, Black, BLUE LOCTITE |
| 11 | 1 | BOLT | 1800012 | NIL | SLAYER LINK BOLT, LOWER, M10X1.0, L:71, 6MM HEX |
| 53 | 2 | WASHER | 1800019 | NIL | WASHER ID: 10.2, OD: 15.5, T: 1 |
| 48 | 4 | SPACER | 1800009 | NIL | LINK BEARING SPACER, OD:22, ID:10, T:2.5 |
| 14 | 1 | BOLT | 1807049 | C | CSUNK BOLT, 8MM X 57MM X M6 INT. |
| 36 | 1 | SCREW, M6x12 | 180566-012-E | NIL | FLAT HEAD C'SUNK SOCKET SCREW, M6-1.0 X 12mm, Stainless black |
| 12 | 1 | BOLT | 1800013 | NIL | SLAYER MP BOLT, M12X1.0, L:73, 6MM HEX |
| 54 | 1 | WASHER | 1800020 | NIL | WASHER ID: 12.2, OD: 17.5, T: 1 |
| 49 | 2 | SPACER | 1800015 | NIL | MP BEARING SPACER, OD:28, ID:12, T:2 |
| 55 | 2 | WASHER | 1800023 | NIL | ENDURO WASHER SEAL FOR 12X28 BEARING |
| 10 | 1 | BOLT | 1800011 | NIL | SLAYER LINK BOLT, UPPER, M10X1.0, L:59, 6MM HEX |
| 13 | 2 | BOLT | 1800016 | NIL | SLAYER DROPOUT BOLT, M10X1.0, L:24, 6MM HEX |
| 44 | 1 | SLEEVE | 1800008 | NIL | SLAYER TT BEARING SLEEVE, ID:10, OD:14, L:29 |
| 45 | 1 | SLEEVE | 1800010 | NIL | SLAYER SS BEARING SLEEVE, ID:10, OD:14, L:41, NECKED |
| 46 | 1 | SLEEVE | 1800014 | NIL | SLAYER MP BEARING SLEEVE, OD:17, ID:12, L:35 |
| 47 | 2 | SLEEVE | 1800017 | NIL | SLAYER DO BEARING SLEEVE, OD:16, ID:10, T:1.8 |
| 50 | 4 | SPACER | 1800018 | NIL | DO BEARING SPACER, OD:19, ID:10, T:2 |
| 1810018 SPIRIT GUIDE KIT SLAYER 2020 | | | | | |
| 17 | 1 | CHAIN GUIDE | 3398001 | A | CHAIN GUIDE |
| 32 | 2 | SCREW | 1800029 | NIL | M6-1.0, 18MM LONG, SOCKET HEAD |
| 33 | 2 | SCREW | 1807132 | NIL | M6-1.0, 25MM LONG, SOCKET HEAD |
| 51 | 3 | SPACER | 3398002 | A | CHAIN GUIDE SPACER |
| 56 | 1 | WASHER | 1807133 | NIL | CHAIN GUIDE WASHER |
| 1810019 BIKE PROTECTION KIT SLAYER 2020 | | | | | |
| 29 | 2 | PROTECTOR | 370002 | NIL | TAILGATE PROTECTOR |
| 28 | 1 | PROTECTOR | 370001 | NIL | DOWNTUBE PROTECTOR |
| 30 | 1 | PROTECTOR | 370003 | NIL | CHAINSTAY PROTECTOR |
| 31 | 1 | PROTECTOR | 370004 | NIL | SEATSTAY PROTECTOR |
| 1810020 CHAINSTAY PROTECTOR 2020 | | | | | |
| 30 | 1 | PROTECTOR | 370003 | NIL | CHAINSTAY PROTECTOR |
| 1817011 AXLE KIT BOOST | | | | | |
| 1 | 1 | AXLE, REAR | 3227009 | C | REAR AXLE 12X 173MM, HARD BLACK ANO |
| 58 | 1 | WASHER | 3227006 | B | WASHER, 12x19x0.5MM, 304 SS |
| 1818003 SHOCK BEARING EYELET KIT | | | | | |
| 5 | 2 | BEARING | 1807036 | NIL | ENDURO 698 LLU MAX 19X8X6 |
| 7 | 1 | BEARING SLEEVE | 1807028 | A | BEARING EYELET SLEEVE FOR SR 19X8X6 CUP |
| 8 | 2 | BEARING SPACER | 1807099 | C | EYELET BEARING SPACER, 5.3MM THK, FOR 40MM LINK WIDTH |
| 15 | 2 | BRG CUP | 1807026 | E | BEARING EYELET FOR SR 19X8X6 BRG |
| 1810021 PIVOT BEARING KIT SLAYER 2020 | | | | | |
| 3 | 2 | BEARING | 1800021 | NIL | ENDURO 6001 LLU MAX 28X12X8 |
| 4 | 4 | BEARING | 1800022 | NIL | ENDURO 6800 LLU MAX 19X10X5 |
| 6 | 4 | BEARING | 1807042 | NIL | ENDURO 6900 2RS MAX, 22X10X6 |
| 1810022 HEAD TUBE PANEL KIT 2020 | | | | | |
| 25 | 1 | HT PORT COVER, LEFT | 1800004 | A | HT PLASTIC PORT COVER, M4, LEFT |
| 26 | 1 | HT PORT COVER, RIGHT | 1800003 | A | HT PLASTIC PORT COVER, M4, RIGHT |
| 34 | 2 | SCREW, M4X10 | 1800024-BK | NIL | C'SUNK SOCKET SCREW, M4x10mm, zinc plated 10.9 steel black |
| 1810023 BB CABLE PORT KIT 2020 | | | | | |
| 2 | 1 | BB PORT COVER | 1800001 | NIL | SLAYER BB PLASTIC PORT COVER |
| 21 | 1 | GROMMET | 1800002 | NIL | SLAYER BB PORT GROMMET, 85A |
| 35 | 2 | SCREW, M4X8 | 1807068-BK | NIL | FLAT HEAD C'SUNK SOCKET SCREW, M4 X 8mm, STAINLESS STEEL, BLACK |
| 22 | 1 | GROMMET | 1809006 | NIL | RUBBER GROMMET FOR 1 CABLE 5mm YF-W13-5 |
| 1810024 RIDE 4 FLIP CHIP KIT 2020 | | | | | |
| 19 | 2 | FLIP CHIP | 180628 | NIL | FLIP CHIP, AL7075, BLACK ANODIZE |

Sold as a kit only. Individual part not sold separately